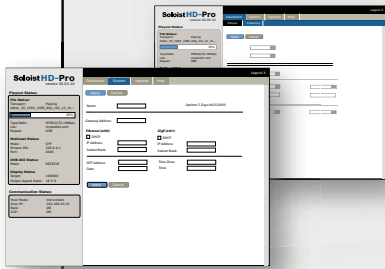


SoloistTM-HD Pro Broadcast Decoder

The Soloist-HD Pro is a broadcast quality High Definition MPEG 2 and AVC decoder. Multi-CODEC decoding has never been easier or more reliable. The Soloist-HD Pro supports ASI, GIGE and Hard Drive Transport Stream decoding. Video outputs include D1(composite), HDMI with HDCP and HD-SDI with embedded audio. Decode MPEG 2 SD 422, HD 420, AVC SD and HD video. Audio decoding includes a single stereo channel of Dolby Digital, Dolby 5.1*, MPEG 1 Layer 2 and AAC-LC audio. Output broadcast quality video with embedded stereo audio on the HD-SDI interface and to consumer monitors with the HDMI interface. Composite D1 video and balanced analog audio are also supported for legacy NTSC or PAL environments. The decoder can down convert HD 1080i or 720 P to Composite or SDI.



features

- **Decode MPEG-2 and AVC High**

Definition: Step up to stunning high definition decoding of AVC/H.264 and MPEG-2

- **ASI Decode:** Use the included ASI interface to decode a live transport stream

- **GIGE Decode:** Use the included GIGE interface to decode a live transport stream

- **Hard Drive Decode:** The Soloist-HD Pro includes a built in hard drive with a command interface and scheduler that can play a list or scheduled transport streams

- **Automatic Fallback with Signal Loss:** The Soloist-HD Pro will fall back to hard-drive playback if a signal is lost.

- **High and Standard Definition:**

Decode both SD and HD content with the Soloist-HD Pro

- **Up and Down Conversion:** Scale video up or down from NTSC to 1080i60.

- **Sound Professional:** Decode stereo MPEG 1 Layer 2, Dolby Digital and decode or down-mix Dolby 5.1

Buy Now!



04.12.09

Related Products

mediaHUB-HD 422:

High and Standard Definition Multi-CODEC Contribution and Distribution Encoder

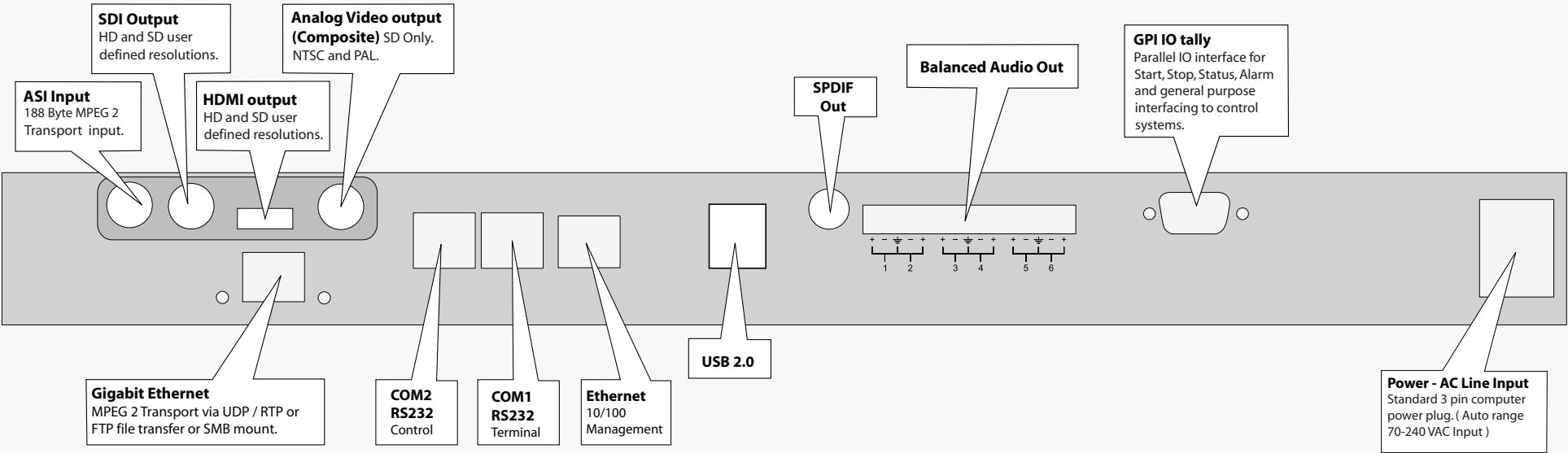
mediaHUB-HD Pro:

High and Standard Definition Contribution and Distribution Encoder

DTA-3050:

Digital turn around router for transporting MPEG 2 via ASI and IP sources to ASI, SMPTE-310 and IP outputs

Soloist™ -HD Pro Broadcast Decoder



SoloistTM-HD Pro Broadcast Decoder Technical Specifications

Transport

ISO13818-1 188 Byte Transport Stream

Sources: ASI, GIGE, Hard Drive

Resolutions

Standard Definition (SD):

NTSC, PAL

High Definition (HD):

720P 60/50, 1080i 60/50

Decode Up and Down conversion SD to and from HD

Video Aspect Format:

Auto, 4x3 or 16x9

Video Interfaces

SDI, SMPTE 259M (SD)

HDSDI, SMPTE 292M (HD)

HDMI with HDCP

Standard Definition (SD) Decode

MPEG 2 SD: MP@ML up to 15 Mbs

MPEG 2 SD: 422P@ML up to 50 Mbs

AVC/H.264: MP@L3.1 up to 10 Mbs

High Definition (HD) Decode

MPEG 2 HD: MP@HL up to 60 Mbs

AVC/H.264 HD: MP@L4.1 and HP@L4.1 up to 20 Mbs

Audio Interfaces

SDI Embedded stereo audio pair per SMPTE 272M (SD) or SMPTE 299M (HD) based on target video resolution

Analog audio on balanced stereo 5 Pin RST

HDMI

Audio Outputs: simultaneous embedding on HDSDI, HDMI and Analog balanced output

Audio Decode

Dolby Digital AC-3:

Bit rates up to 640kbps. Sample rates of 32, 44.1 and 48KHz. Multi-channel 5.1 downmix.

MPEG 1 and MPEG 2 Layer I, II and III (MP3) 2.0:

Bit rates up to 448kbps (Layer I), 384kbps (Layer II) or 320kbps (Layer III).

Sample rates of 16, 22.05, 24, 32, 44.1 and 48KHz.

Single channel, dual channel, joint stereo and stereo modes.

AAC-LC MPEG-2 and MPEG-4:

Bit rates up to 384kbps.

Sample rates of 7.35, 8, 11.025, 12, 16, 22.05, 24, 32, 44.1 and 48KHz.

Host Platform

Storage: 160GB hard drive

Embedded Linux real time operating system

Power: 70-240 VAC 50-60Hz and 65 Watts (20 Watts typical)

Size: 1RU rack mount chassis.

19in. wide, 1.75in. high, 10in. deep

Weight: 8 lbs (3.6 Kg)

Environmental:

Active cooling (Fans)

0 to 90 Degrees Fahrenheit

Less than 70% RH

Non-Condensing

Communications and Control

Ethernet 10/100

GIGE

Ethernet Protocols:

HTTP, Telnet, FTP, UDP/RTP, NTP

Serial Communications:

2-RS232 (38400-115,200K, 8, 1 N)

Front Panel

Keypad:

Mode, Select, Enter, Escape, Up, Down, Left, Right

Blue Translucent LCD:

(20 characters by 2 rows)

Host Status LEDs:

Power, Alarm, Link, Busy, Storage.

Status LEDs:

Play, Multicast, Video, Audio, Resolution, Alarm



Digisat International Inc.

4195 W. New Haven Ave., Suite 15

Melbourne, FL 32904

USA

+1-321-676-5250

Email: sales@digisat.org

<http://www.digisat.org>