

# KĀLO™

## RADICAL ACCESS

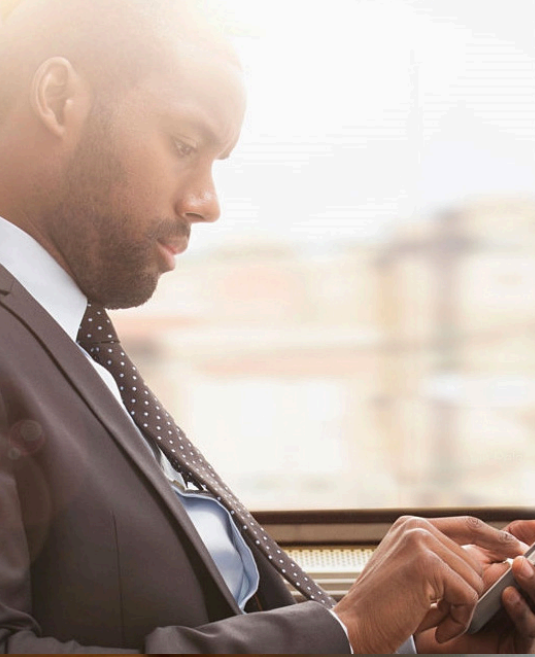
### MOBILE ROAMING INTERNET PLANS

## REDEFINING GLOBAL AND MOBILE CONNECTIVITY SERVICES

Kymeta's KĀLO™ service redefines connectivity with services purchased in familiar, flexible data packages. Now people and sectors that have long been unreachable, underserved, and ignored by traditional networks have access to simplified global connectivity. Purchasing a KĀLO service plan is easy, and getting connected to the KĀLO network is simple and quick. Once on the KĀLO network, you'll have access to the advantages KĀLO service offers: flexible satellite connectivity for both fixed and mobile applications with the use of Kymeta mTenna™ technology and KyWay™ terminals. Providing a fully-provisioned end-to-end connectivity solution, KĀLO service unlocks global, mobile access for fast-growing industries that have been historically difficult to support, including maritime, the Internet of things, first responders, buses, rail, energy, connected car, and more.



# KYMETA™



# KĀLO™

## FEATURES

- Radical access - easy to understand and buy mobile connectivity
- Simple provisioning for quick set up
- Comes bundled with KyWay™ terminals that don't require technicians for installation and set up
- Global coverage area for ubiquitous access
- Familiar data package options provided in by-the-gigabyte plans
- Flexible offerings without complicated contracts
- Access to the Kymeta Partner Portal
- Scale-up packages to support fluctuating consumption levels

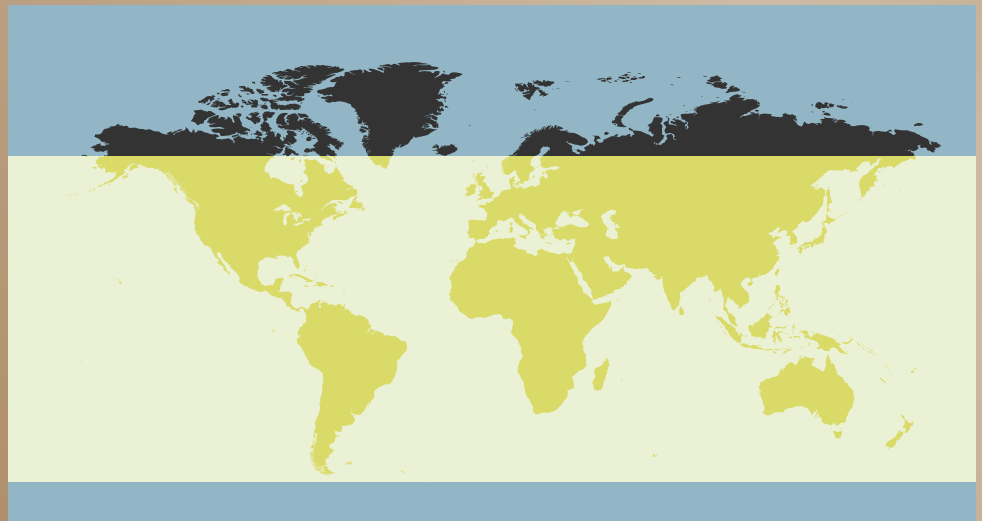
## MONTHLY PLANS

Now you can finally buy services from space the way you want to buy them... by the gigabyte!

Buy a package that best suits your needs:

1 GB 5 GB 10 GB 20 GB 40 GB 80 GB

## KĀLO SERVICE COVERS YOU



[click here to  
REQUEST A QUOTE!](#)

