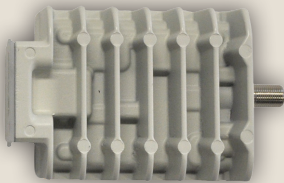


NEWTEC LNB0100 -
UNIVERSAL (DUAL LO) KU-BAND LNB



NEWTEC BUC0100 - 3W KU-BAND
UNIVERSAL BLOCK UP CONVERTOR



NEWTEC BUC0200 - 4W KU-BAND
UNIVERSAL BLOCK UP CONVERTOR

Description

The Newtec MDM3100 IP Satellite modem can be packaged with a performing ODU portfolio. The BUC's and LNB's have been selected to provide optimal performance with MDM3x000 return technologies.



Power Efficiency

The MDM3100 return technology is compatible with fully saturated BUCs. So, on top of the power efficient BUC technology, the saturated output power gives even higher power efficiency.

Ease Of Installation

The ODU Portfolio is compatible with Point & Play® easy-installation technology, supporting the installation of the complete terminal by installers without any specific qualification or expensive tooling.

Wide Coverage and Flexibility

The Newtec BUCs feature standard plus extended Ku-band uplink range, covering 13.75 -14.5 GHz contiguously. The single LNB can be used for all three Ku-band downlink sub-bands of Euro Low, Americas & Euro High (10.7 - 12.75 GHz). Under control of the MDM3100 the LNB can be switched across two L-band ranges through DiSEqC (22KHz tone).

Compact Design

As a consequence of the highly power efficient BUC design and operation, less heat needs to be sinked. This results in a highly compact and light weight solution.

Buy Now!

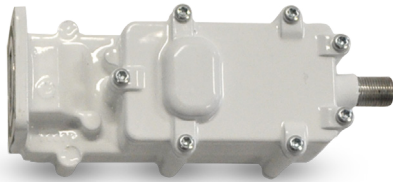


LNB SPECIFICATIONS

Highlights

- Integrated LNB and TX Reject Filter
- Dual oscillator

NEWTEC LNB0100 - UNIVERSAL (DUAL LO) KU-BAND LNB



Performance

- Noise Figure 0.7dB typical
- Gain 52 - 67 dB
- Image Rejection 80dB
- Pin for Pout1dB
 - @14GHz +7dBm (typical)
 - @14.5GHz +29dBm (typical)

Coverage

- Full Ku-band
 - RF Frequency 10.7 to 12.75 GHz
 - Local Oscillator 9.75 (22kHz off) or 10.6 GHz (22kHz on)

Interfaces

- Waveguide WG17, R120, WR75, UBR120
- F connector (75 ohm)

Mechanical & Environment

- Housing 115.8 (L) x 44.2 (W) x 46.5 (H) mm
- Weight 250g
- Operating temperature -40°C to 70°C
- Humidity 0% - 100% non-condensing

Standards

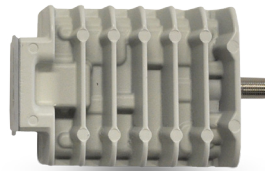
- RoHS Compliance
- CE compliance
- WEEE

BUC SPECIFICATIONS

Highlights

- 3W and 4W version
- Universal Ku-Band
- Innovative design
- Power efficient
- Compact in size
- Low distortion

NEWTEC BUC0100 - 3W KU-BAND UNIVERSAL BLOCK UP CONVERTOR



Performance

- Distortion
 - P1dB +34 dBm min. over temperature
 - Psat +35.3 dBm @ 14 GHz
 - ACPR 26 dBc @ Pout = +34 dBm
- Power Consumption 18 W typical / 23W max.

Coverage

- Full Ku-band
 - RF Frequency 13.75 to 14.50 GHz
 - Local Oscillator 12.8 GHz

Interfaces

- Waveguide WR75 with Groove
- F connector (75 ohm)

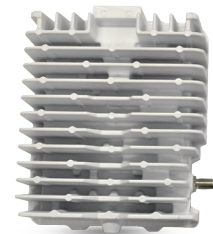
Mechanical & Environment

- Housing 91.55(L) x 68(W) x 42.5(H) mm
- Weight 350g
- Operating temperature -40°C to 55°C
- Humidity 0% - 100% non-condensing

Standards

- RoHS Compliance
- CE compliance
- WEEE

NEWTEC BUC0200 - 4W KU-BAND UNIVERSAL BLOCK UP CONVERTOR



Performance

- Distortion
 - P1dB +36 dBm min. over temperature
 - Psat +37.5 dBm @ 14 GHz
 - ACPR 26 dBc @ Pout = +35 dBm
- Power Consumption 37 W max.

Coverage

- Full Ku-band :
 - RF Frequency 13.75 to 14.50 GHz
 - Local Oscillator 12.8 GHz

Interfaces

- Waveguide WR75 with Groove
- F connector (75 ohm)

Mechanical & Environment

- Housing 175.9 (L) x 143 (W) x 56.5 (H) mm
- Weight 1.7 kg
- Operating temperature -40°C to 55°C
- Humidity 0% - 100% non-condensing

Standards

- RoHS Compliance
- CE compliance
- WEEE



Digisat International Inc.
4195 W. New Haven Ave., Suite 15
Melbourne, FL 32904
USA
+1-321-676-5250
Email: sales@digisat.org
http://www.digisat.org