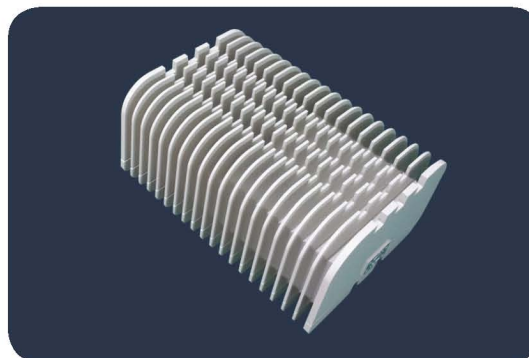




BUC

KA-BAND 10W

7010STC-O3B



TYPICAL SPECIFICATIONS

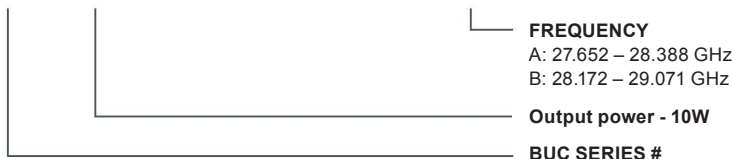
Output frequency	A: 27.652 - 28.388 GHz B: 28.172 - 29.071 GHz
Input frequency	A: 1052 - 1788 MHz B: 972 - 1871MHz
LO frequency	A: 26.60 GHz, B: 27.20 GHz
Frequency conversion	Double conversion
Frequency sense	No inversion
Saturate output power	40 dBm min. @ -40°C to 25°C 39 dBm min. @ up to 55°C
Maximum linear output power	38 dBm min.
Input Return Loss	10dB max.
Output Return Loss	10dB max.
Phase noise (SSB)	-73 dBc max. @ 1KHz -83 dBc max. @ 10KHz -93 dBc max. @ 100KHz
External reference signal frequency	10MHz
External reference level	-5 to +5 dBm
External reference phase noise	-145 dBc/Hz max. @1KHz
Spectral regrowth	25dBc max. @ 38dBm
Group delay variation	±5.0 nanoseconds over any 216MHz

SPURIOUS

Signal related	-60dBc max. @ 38dBm -60dBm max. -60dBc max. @ 38dBm -60dBm max.
Signal independent 2IF+LO LO leakage	
Gain control	65 dB max (15dB, 1dB step)
Gain stability over temp	±2.5 dB at any const. frequency
Gain flatness	±1.5 dB in any 216MHz ±2.5 dB over full band
Power requirement	+36 to +72V supplied through MS connector
Power consumption	170W max.
Input interface	N-female
Output interface	WR-28
Dimensions	256 (L) x 180 (W) x 116 (H) mm
Weight	4.5 kg
Operating temp.	-40°C to 55°C
Humidity	0 – 95%
M & C Interface	Ethernet or RS232 through MS3112e14-12P connector - Output power - Temperature - LO status - Output power mute - Gain control

HOW TO ORDER

7010STC-O3B-A



Buy Now!



KA-BAND 10W 7010STC-O3B

Connector	Parameter	Description
J1	IF Input Connector	N-Female, panel mounted
	Impedance	50 ohm
	10 MHz Reference input	
J2	RF output connector	WR28
J3	DC / M&C (Ethernet or RS232)	Panel-mount (MS3112e14-12P)
	J3-A	Ethernet Tx-
	J3-B	Ethernet Tx+
	J3-C	Ethernet Rx+
	J3-D	Ethernet Rx-
	J3-E	
	J3-F	RS-232 GND
	J3-G	RS-232 TxD
	J3-H	RS-232 RxD
	J3-J	DC Power (+36 to +72V)
	J3-K	DC Power return
	J3-L	Mute @ High
	J3-M	Mute return (=RS-232 GND)

MECHANICAL DIAGRAM

